

The Russell Cabins



BIRD'S EYE
BILL INGRAM

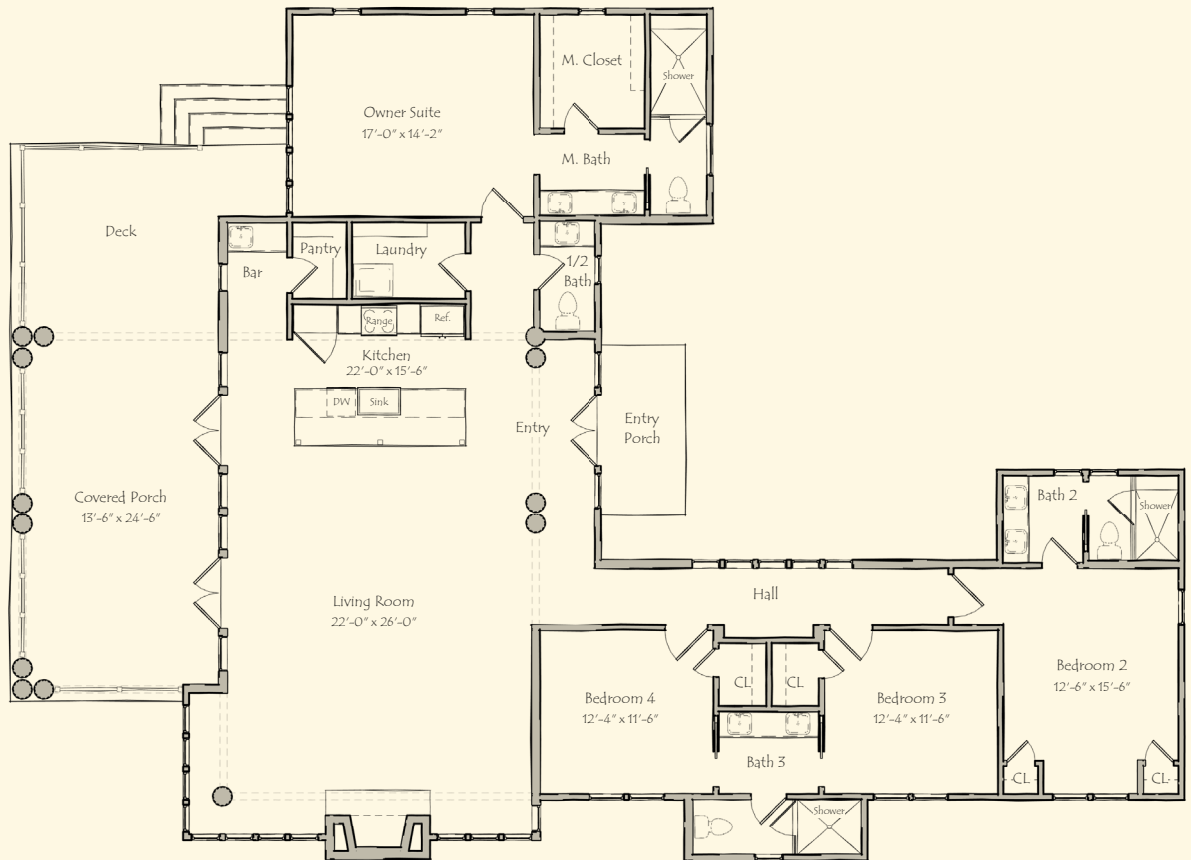
Featuring

- Four bedrooms and three and one-half bathrooms on one level
- Owner's and guest bedroom suites offer optimal privacy
- Open kitchen design to seamlessly blend cooking with entertaining
- Masterfully designed living room windows provide bird's eye views of Lake Martin
- Handsomely crafted stone fireplace
- Expansive covered porch enhances outdoor living accompanied by the open sun deck

Designed by: Bill Ingram
Builder: Classic Homes

For additional information about Russell Cabins or other Russell Lands neighborhoods,
call 256.215.7011 or visit www.RussellLands.com.





BIRD'S EYE ~ BILL INGRAM
 2,450 sq. ft. conditioned ~ 601 sq. ft. porches & decks
 all square footages and dimensions are approximate