



# HUNTER'S LODGE



*Lakeside Elevation*

- Architect: Mitch Ginn
- Four bedrooms and four and one-half bathrooms
- Primary suite and guest suite on main level
- Spacious kitchen-dining-living area with vaulted ceilings offering lake views
- Upscale appliance package
- Handsomely crafted stone fireplace
- Lake-level living includes two bedrooms, rec room, wet bar, and covered terrace
- Thoughtfully designed with lake-prep storage room
- 2,984 sq. ft. of conditioned space

PRICE: Pricing will depend on final features and lot selection.

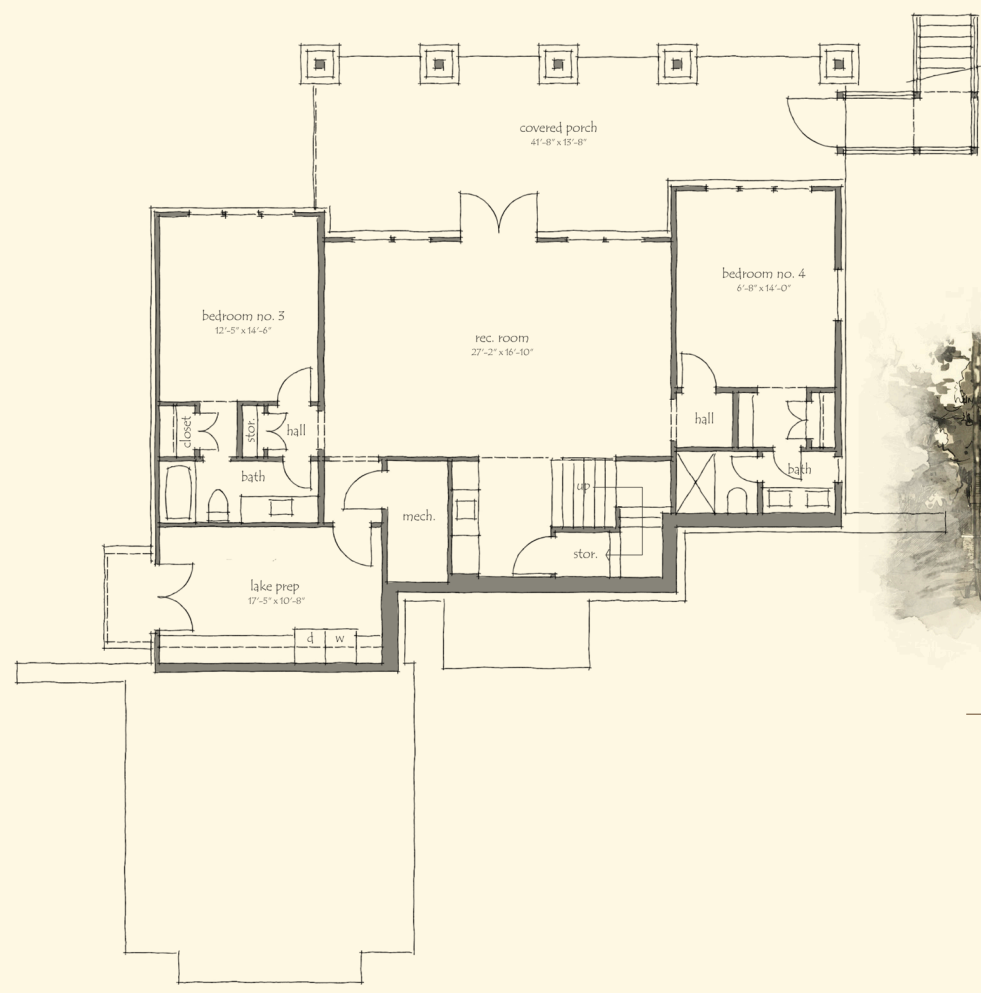
For additional information about Russell Lands neighborhoods, call 256.215.7011 or visit [www.RussellLands.com](http://www.RussellLands.com).



*Street Side Elevation*



*Main Level*  
**HUNTER'S LODGE**  
 1,621 Heated Sq. Ft.



*Lake Level*  
**HUNTER'S LODGE**  
 1,363 Heated Sq. Ft.